

The Bitterwater Land and Cattle Co., Cal Poly, and UCCE are hosting a *free* public tour and field day at a SLO County ranch on Saturday, April 20, 2019 from 9:00 am to 4:00 pm

Theme of the day: Management of ranch resources in challenging environments: livestock, wildlife, water, soils, vegetation, and adapting to uncertain and varying weather and economic patterns



- Meet at the “Historic Barn” at the ranch headquarters
- High clearance vehicles advised for the tour, 4X4 recommended
- Speakers:
 - Chuck Pritchard, Ranch Owner
 - Tod Tognazzini, California Dept. Fish & Wildlife
 - Karl Striby, USDA-Natural Resources Conservation Service
 - Marc Horney, Ph.D., Rangeland Ecologist, Cal Poly
 - Royce Larsen, Ph.D., Natural Resource Advisor, UCCE

Bring your “outdoors” gear: Work/hiking boots, binoculars, camera, light jacket/windbreaker, long pants, hat, sunscreen, repellent, etc., AND **your own lunch and plenty of water**

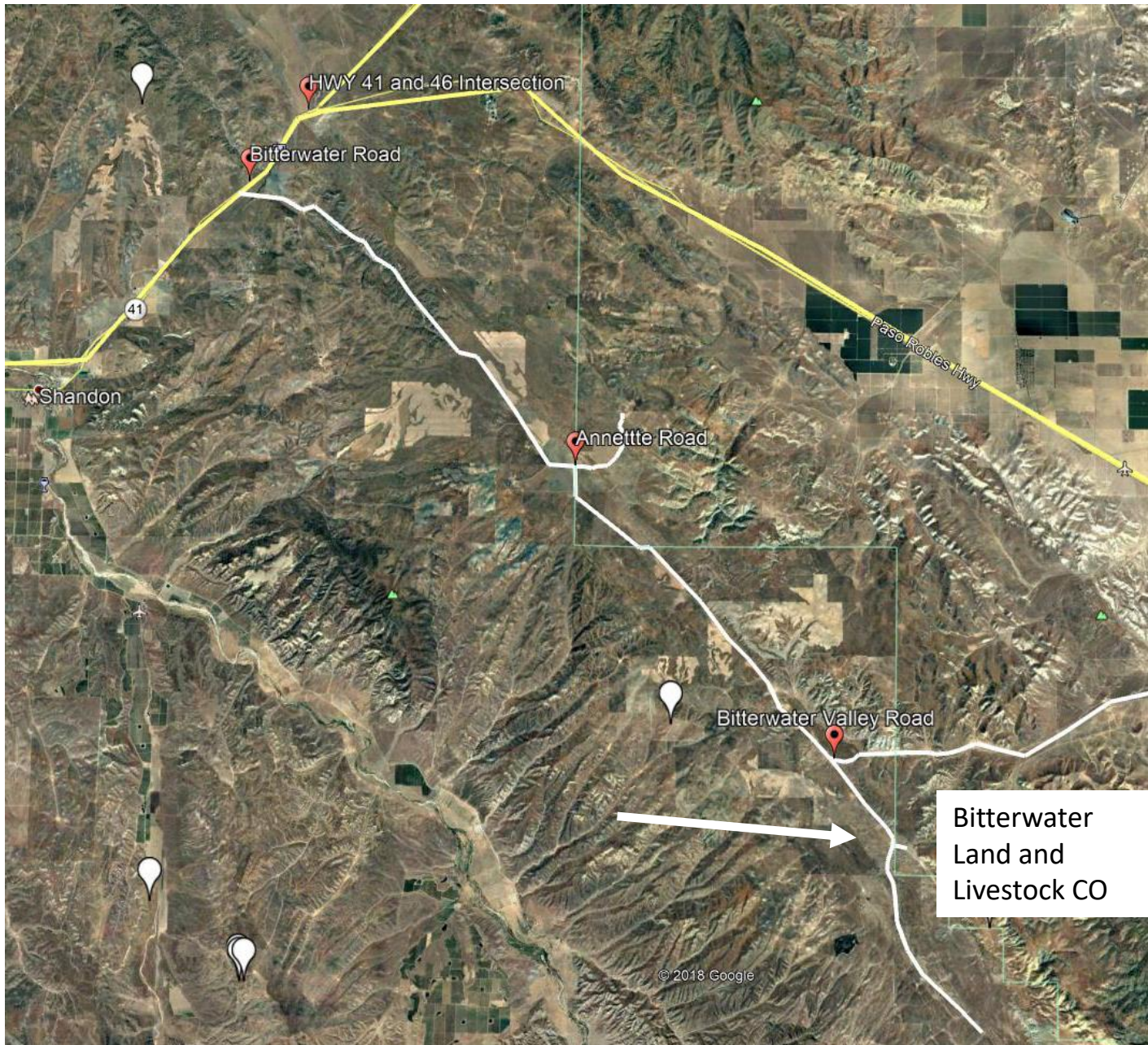
Will be rescheduled in the event of rain

Limit of 50, Sign up at:

<http://ucanr.edu/survey/survey.cfm?surveynumber=27167>

Driving Directions from Paso Robles:

Take Highway 46 east 20.9 miles past Shandon. Turn right onto Bitterwater Road, prior to the Hwy 41 and Hwy 46 intersection. Drive south about 19 miles to 805 Bitterwater Rd. Stay on the road south bound. Do not go to Annette, and do not take the Bitterwater Valley Road. Look for signs at entrance to ranch.



Driving Directions from San Luis Obispo:

From Monterey St. onramp to Hwy 101, take Hwy 101 north 7.6 miles to CA 58 exit (Santa Margarita). Proceed on CA 58 38.8 miles east to Bitterwater Rd. Turn left onto Bitterwater Rd from CA 58, go 12.7 miles to 805 Bitterwater Rd. Turn right onto ranch. Watch for signs at ranch entrance.

